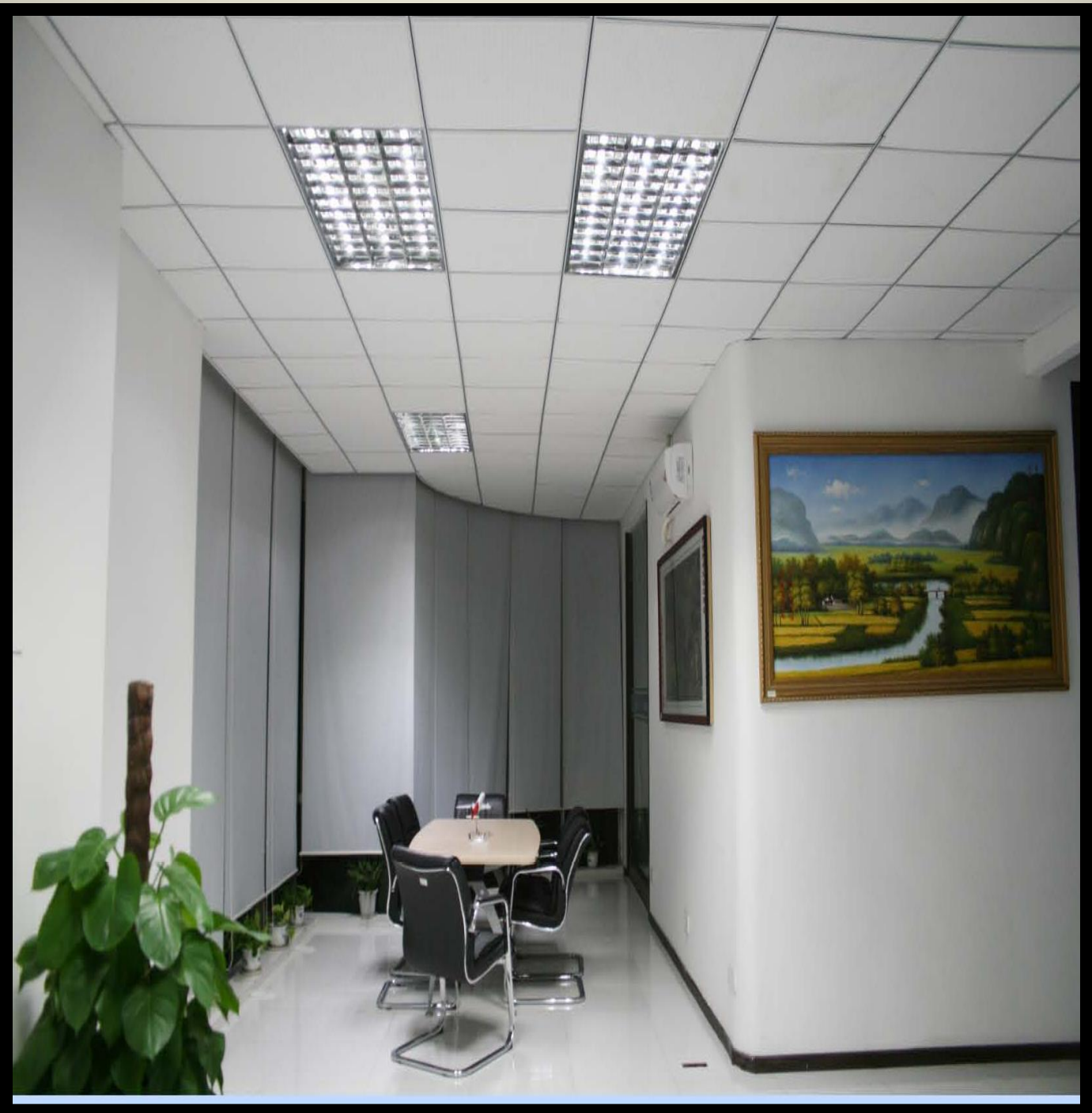


# LED FLUORESCENT TUBES



# UNI SERIES LED FLUORESCENT TUBES



Model no	Led power	Voltage	Lumen/watt	Colour rendering (RA)	Colour temp (K)	Total flux
UNIDWLF-0001	22W	AC100-240V/50-60HZ	68 lm/watt	>75	3000-8000K	910lm
UNIDWLF-0002	20W	AC100-240V/50-60HZ	68lm/watt	>75	3000-8000K	830lm
UNIDWLF-0003	10W	AC100-240V/50-60HZ	68lm/watt	>75	3000-8000K	550lm
UNIDWLF-0004	23W	AC100-240V/50-60HZ	70lm/watt	>75	3000-8000K	800lm
UNIDWLF-0005	19W	AC100-240V/50-60HZ	70lm/watt	>75	3000-8000K	780lm
UN+DWLF-0006	10W	AC100-240V/50-60HZ	70lm/watt	>75	3000-8000K	416lm
UNIDWLF-0009	8.5W	AC100-240V/50-60HZ	70lm/watt	>75	3000-8000K	550lm
UNIDWLF-0023	27W	AC100-240V/50-60HZ	70lm/watt	>75	3000-8000K	1460lm
UNIDWLF-0028	19W	AC100-240V/50-60HZ	70lm/watt	>75	3000-8000K	1210lm

# BNL SERIES FLUORESCENT TUBES



BNL-RG-8W-174

BNL-RG-10W-216

BNL-RG-15W-276

BNL-RG-18W-342

BNL-RG-20W-420

Model no	Led power	Voltage	Luminous flux	Colour rendering (RA)	Colour temp	Diameter
BNL-RG-8W-174	8W	AC110V/220V 50-60HZ	500-600LM	>80	3000-6500K	600MM T8,T10
BNL-RG-10W-216	10W	AC110V/220V 50-60HZ	800-1000LM	>80	3000-6500K	600MM T8,T10
BNL-RG-15W-276	15W	220/110V 50-60HZ	1000-1200LM	>80	3000-3500K	1200MM T8,T10
BNL-RG-18W-342	18W	110/220V 50-60HZ	1200-1300LM	>80	3000-6500K	1200MM T8,T10
BNL-RG-20W-420	20W	220V/110V 50-60HZ	1200-1450LM	>80	3000-6500K	1500MM T8.T10

# ZGSM SERIES FLUORESCENT TUBES



T10



T8



T5

Model no	Led power	Voltage	Luminous flux	Colour rendering (RA)	Colour temp (K)	Diameter
ZGSM-T10-600-150P	12W	90-264VAC 50-60HZ	927LM	>80	3000-6500K	600MM
ZGSM-T10-1200-150P	12W	90-264VAC 50-60HZ	927LM	>80	3000-6500K	1200MM
ZGSM-T10-1200-180P	15W	90-264VAC 50-60HZ	1120LM	>80	3000-6500K	1200MM
ZGSM-T10-1200-240P	18W	90-264VAC 50-60HZ	1398LM	>80	3000-6500K	1200MM
ZGSM-T10-1500-240P	18W	90-264VAC 50-60HZ	1398LM	>80	3000-6500K	1500MM
ZGSM-T10-1500-300P	25W	90-264VAC 50-60HZ	2030LM	>80	3000-6500K	1500MM
ZGSM-T10-1800-390P	30W	90-264VAC 50-60HZ	2336LM	>80	3000-6500K	1800MM
ZGSM-T8-600-150P	12W	90-264VAC 50-60HZ	927LM	>80	3000-6500K	600MM
ZGSM-T8-1200-150P	12W	90-264VAC 50-60HZ	927LM	>80	3000-6500K	1200MM
ZGSM-T8-1200-180P	15W	90-264VAC 50-60HZ	1120LM	>80	3000-6500K	1200MM
ZGSM-T8-1200-240P	18W	90-264VAC 50-60HZ	1398LM	>80	3000-6500K	1200MM
ZGSM-T8-1500-240P	18W	90-264VAC 50-60HZ	1398LM	>80	3000-6500K	1500MM
ZGSM-T8-1500-300P	25W	90-264VAC 50-60HZ	2030LM	>80	3000-6500K	1500MM
ZGSM-T8-1800-390P	30W	90-264VAC 50-60HZ	2336LM	>80	3000-6500K	1800MM
ZGSM-T5-600-100P	8W	90-264VAC 50-60HZ	618LM	>80	3000-6500K	600MM
ZGSM-T5-1200-180P	15W	90-264VAC 50-60HZ	1158LM	>80	3000-6500K	1200MM